

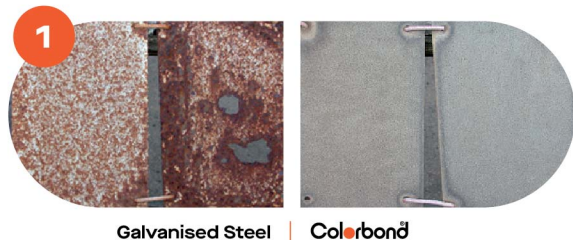


FOR BEAUTIFUL
COLOURS THAT LAST

Colorbond®

THE COLORBOND® STEEL ADVANTAGE

This is what every detail, every component and every finishing touch leads to:
the 5 unparalleled advantages of COLORBOND® steel.
Go on, challenge the boundaries of your builds and designs.
Be it to protect, beautify or endure, COLORBOND® steel comes with an enhanced
warranty offer* – realising creations that last for longer.



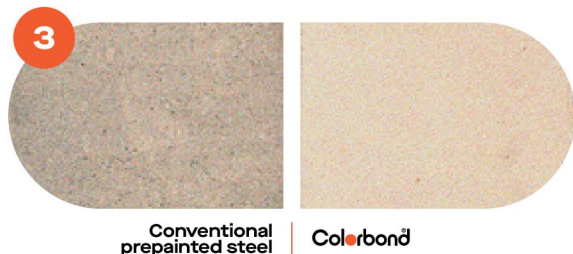
Outstanding Corrosion Resistance

With superior corrosion resistance compared to other coated steels, COLORBOND® steel along with its ZINCALUME® steel substrate core and proprietary paint system safeguard buildings even in severe marine environments.



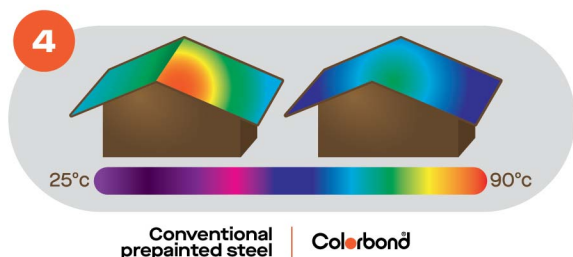
Beautiful Colours for Longer

The proprietary paint system protects surfaces from fading, chalking and peeling, ensuring timeless designs that stand out with vivid colour.



Clean Technology

Incorporated into COLORBOND® steel's paint system, Clean Technology prevents dirt from bonding to the surface. Every rainfall washes dirt away easily, preserving the pristine condition of your creations.

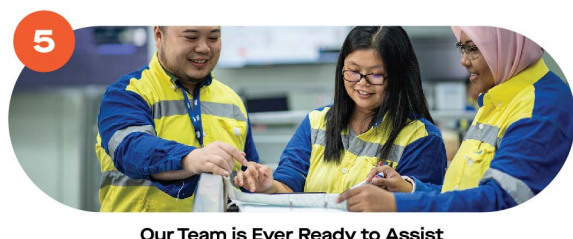


Reflects Heat for More Comfort

COLORBOND® steel is also an intelligent heat insulator. It keeps interiors cool with the help of THERMATECH® Technology, which reduces heat transmitted through the roof[^]. This contributes to energy conservation and enables better compliance with Green Building rating requirements^{^^}.

[^] Compared to conventional paint system.

^{^^} Subject to building design.



Service Support from Design to Build

Get the full picture on COLORBOND® steel's capabilities for your creations. Full support and assistance are provided including Specification Support, Consultation & Risk Assessment, and Advisory Role in Material Quality & Application.

* Warranty terms and conditions apply.



The iconic choice of premier coated steels with its superior corrosion resistance and paint weathering.



**African White /
*Amazing White
(SRI:81)**



**Off White /
*Enduring White
(SRI:82)**



**Shale Grey /
*Ultimate Grey
(SRI:68)**



**Armour Grey /
*Livid Grey
(SRI:48)**



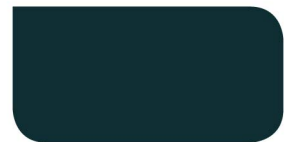
**Cape White /
*Cedarberg White
(SRI:78)**



**African Cream /
*Durable Cream
(SRI:71)**



**Volcanic Grey /
*Ore Grey
(SRI:31)**



**Cape Charcoal /
*African Charcoal
(SRI:22)**



**Colonial Green /
*Garden Route Green
(SRI:26)**



**Heritage Red /
*Enchanting Red
(SRI:32)**



**African Blue /
*Two Oceans Blue
(SRI:27)**

* COLORBOND® ULTRA in AZ200 Coating Mass

Colorbond® MATT

Contemporary in appearance yet durable and strong, the matt variant beautifully diffuses light for an elegant design appearance.



**Winter Matt / *Sonata Matt
(SRI:80)**



**Scallop Matt / *Oyster Matt
(SRI:79)**



**Coffee Matt / *Latte Matt
(SRI:65)**



**Hidden Matt / *Alley Matt
(SRI:47)**



**Graphite Matt / *Iron Matt
(SRI:26)**



**Eclipse Matt / *Granite Matt
(SRI:18)**

* COLORBOND® ULTRA in AZ200 Coating Mass

SRI is calculated using ASTM E1980-01 with Medium Convection Coefficient (12) value reported. This data is approximate values only, may vary based on paint formulation and/or metallic coating thickness.

The colours shown in the colour chart have been reproduced to represent actual product colours as accurately as possible. However, we recommend you to check your chosen colour against actual sample of the product before purchasing, as varying light conditions and limitations of the printing process may affect colour tones.

To identify genuine COLORBOND® steel made only by BlueScope, please check the reverse side of the sheet for the following branding text:

COLORBOND(R) steel CLN AZ150 W30 made by BlueScope 16:18 09:JAN:24 11



BlueScope Steel Southern Africa (Pty) Ltd

No.1 Bridgeway, Bridgeways Precinct, Office 325, Cape Town, 7441 South Africa.

+27 (0)21 442 5420

www.bluescope.co.za

[YouTube](#) [LinkedIn](#) BlueScope Steel Africa & Indian Ocean Islands



Scan now for more information
on COLORBOND® steel

The information contained in this brochure is of a general nature only, and has not been prepared with your specific needs in mind. You should always obtain specialist advice to ensure that any materials, approaches and techniques referred to in this brochure meet your specific requirements.

NS BlueScope Malaysia makes no warranty as to the accuracy, completeness or reliability of any estimates, opinions or other information contained in this brochure, and to the maximum extent permitted by law, NS BlueScope Malaysia disclaims all liability and responsibility for any loss or damage, direct or indirect, which may be suffered by any person acting in reliance on anything contained in or omitted from this document.

COLORBOND®, ZINCALUME® and THERMATECH® are trademarks of BlueScope Steel Limited.

BlueScope is a registered trademark of BlueScope Steel Limited.

Copyright© 2024 NS BlueScope Malaysia Sdn. Bhd. All rights reserved. No part of this brochure may be reproduced, stored in a retrieval system, or transmitted in any form or by any means, electronic, mechanical, photocopying, recording or otherwise, without the written permission of NS BlueScope Malaysia Sdn. Bhd.