



FOR BEAUTIFUL  
COLOURS THAT LAST

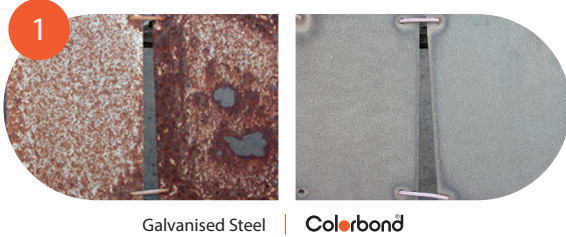
Colorbond®

# THE COLORBOND® STEEL ADVANTAGE

This is what every detail, every component and every finishing touch leads to:  
the 5 unparalleled advantages of COLORBOND® steel.

Go on, challenge the boundaries of your builds and designs.

Be it to protect, beautify or endure, COLORBOND® steel comes with an enhanced warranty offer\* – realising creations that last for longer.



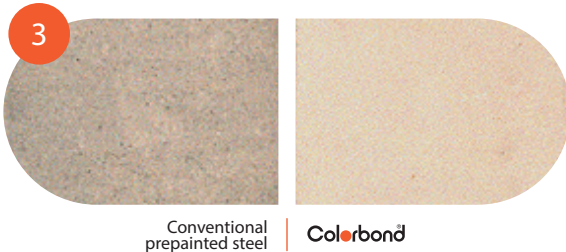
## Outstanding Corrosion Resistance

With superior corrosion resistance compared to other coated steels, COLORBOND® steel along with its ZINCALUME® steel substrate core and proprietary paint system safeguard buildings even in severe marine environments.



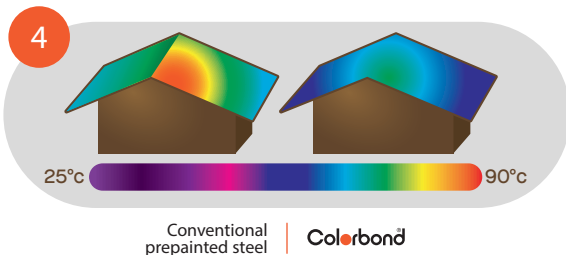
## Beautiful Colours for Longer

The proprietary paint system protects surfaces from fading, chalking and peeling, ensuring timeless designs that stand out with vivid colour.



## Clean Technology

Incorporated into COLORBOND® steel's paint system, Clean Technology prevents dirt from bonding to the surface. Every rainfall washes dirt away easily, preserving the pristine condition of your creations.



## Reflects Heat for More Comfort

COLORBOND® steel is also an intelligent heat insulator. It keeps interiors cool with the help of THERMATECH® Technology, which reduces heat transmitted through the roof<sup>^</sup>. This contributes to energy conservation and enables better compliance with Green Building rating requirements<sup>^^</sup>.

<sup>^</sup> Compared to conventional paint system.

<sup>^^</sup> Subject to building design.



Our Team is Ever Ready to Assist

## Service Support from Design to Build

Get the full picture on COLORBOND® steel's capabilities for your creations. Full support and assistance are provided including Specification Support, Consultation & Risk Assessment, and Advisory Role in Material Quality & Application.

\* Warranty terms and conditions apply.

The iconic choice of premier coated steels with its superior corrosion resistance and paint weathering.



African White AZ150  
Amazing White AZ200  
(SRI:83)



Off White AZ150  
Enduring White AZ200  
(SRI:82)



Cape White AZ150  
Cedarberg White AZ200  
(SRI:78)



African Cream AZ150  
Durable Cream AZ200  
(SRI:71)



Shale Grey AZ150  
Ultimate Grey AZ200  
(SRI:68)



Armour Grey AZ150  
Livid Grey AZ200  
(SRI:48)



Volcanic Grey AZ150  
Ore Grey AZ200  
(SRI:31)



Cape Charcoal AZ150  
African Charcoal AZ200  
(SRI:22)



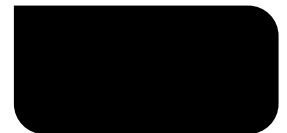
Colonial Green AZ150  
Garden Route Green AZ200  
(SRI:26)



African Blue AZ150  
Two Oceans Blue AZ200  
(SRI:27)



Gun Metal Grey AZ150  
Jumbo Grey AZ200  
(SRI:28)



Night Sky AZ150\*  
Raven AZ200\*  
(SRI:-2)

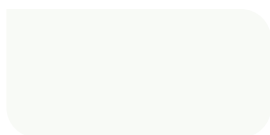


Heritage Red AZ150  
Enchanting Red AZ200  
(SRI:32)

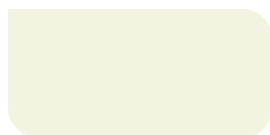
\* These colours are not available with CLEAN Technology.

## Colorbond® MATT

Contemporary in appearance yet durable and strong, the matt variant beautifully diffuses light for an elegant design appearance.



Winter Matt AZ150  
Sonata Matt AZ200  
(SRI:80)



Scallop Matt AZ150  
Oyster Matt AZ200  
(SRI:79)



Coffee Matt AZ150  
Latte Matt AZ200  
(SRI:65)



Hidden Matt AZ150  
Alley Matt AZ200  
(SRI:47)



Graphite Matt AZ150  
Iron Matt AZ200  
(SRI:26)



Eclipse Matt AZ150  
Granite Matt AZ200  
(SRI:18)



Obsidian Matt AZ150  
Forge Matt AZ200  
(SRI:26)

SRI is calculated using ASTM E1980-01 with Medium Convection Coefficient (12) value reported. This data is approximate values only, may vary based on paint formulation and/or metallic coating thickness.

The colours shown in the colour chart have been reproduced to represent actual product colours as accurately as possible. However, we recommend you to check your chosen colour against actual sample of the product before purchasing, as varying light conditions and limitations of the printing process may affect colour tones.

To identify genuine COLORBOND® steel made only by BlueScope, please check the reverse side of the sheet for the following branding text:

COLORBOND(R) steel made by BlueScope G550 CLN AZ150 W30 0.53 TCT (0.48 BMT) hh:mm dd:mm:yy 11

COLORBOND(R) MATT steel made by BlueScope G550 CLN AZ150 W30 0.53 TCT (0.48 BMT) hh:mm dd:mm:yy 11

COLORBOND(R) ULTRA steel made by BlueScope G550 CLN AZ200 W30 0.54 TCT (0.48 BMT) hh:mm dd:mm:yy 11

COLORBOND(R) ULTRA MATT steel made by BlueScope G300 CLN AZ200 W30 0.54 TCT (0.48 BMT) hh:mm dd:mm:yy 11



## BlueScope Steel Southern Africa (Pty) Ltd

Unit B1, Ground Floor, Mayfair Square, Century Way  
Century City  
7441

☎ +27 (0)21 442 5420

🌐 [www.bluescope.co.za](http://www.bluescope.co.za)

📺📺📺 BlueScope Steel Africa & Indian Ocean Islands



Scan now for more information  
on COLORBOND® steel

The information contained in this brochure is of a general nature only, and has not been prepared with your specific needs in mind. You should always obtain specialist advice to ensure that any materials, approaches and techniques referred to in this brochure meet your specific requirements.

NS BlueScope Malaysia makes no warranty as to the accuracy, completeness or reliability of any estimates, opinions or other information contained in this brochure, and to the maximum extent permitted by law, NS BlueScope Malaysia disclaims all liability and responsibility for any loss or damage, direct or indirect, which may be suffered by any person acting in reliance on anything contained in or omitted from this document.

COLORBOND®, ZINCALUME® and THERMATECH® are trademarks of BlueScope Steel Limited.

BlueScope is a registered trademark of BlueScope Steel Limited.

Copyright © 2025 NS BlueScope Malaysia Sdn. Bhd. All rights reserved. No part of this brochure may be reproduced, stored in a retrieval system, or transmitted in any form or by any means, electronic, mechanical, photocopying, recording or otherwise, without the written