

Overpainting and Restoration of exterior BlueScope coated steel products

INTRODUCTION

COLORBOND® prepainted steel is manufactured by BlueScope on a continuous coil paint coating line. This involves the application of high-quality paint to a metallic coated steel substrate, which is then baked in a high temperature oven, to create a durable finish.

ZINCALUME® steel, also manufactured by BlueScope, is supplied with a specially formulated clear resin on the surface to avoid fingerprint marks during installation.

If required, COLORBOND® steel, ZINCALUME® steel and any coated steel products manufactured by BlueScope can be successfully overpainted. However, the following should be considered:

- Air drying paints have different weathering characteristics to COLORBOND® steel. This means that the high durability of the COLORBOND® steel finish is often not matched by air dried paints, including touch-up paint; and
- The overpainting of COLORBOND® steel, ZINCALUME® steel or any coated steel manufactured by BlueScope will void any warranties issued.
- There is no colour match for COLORBOND® steel with a metallic finishing or special effect finishing prepainted steel.



OVERPAINTING

- It is normal practice to ensure any surface to be painted is in a suitable condition for painting. The most appropriate preparation is dependent on the age and condition of the surface. Table 1 and 2 provide recommendations on surface preparations for COLORBOND® steel, ZINCALUME® steel and any coated steel products manufactured by BlueScope prior to overpainting.

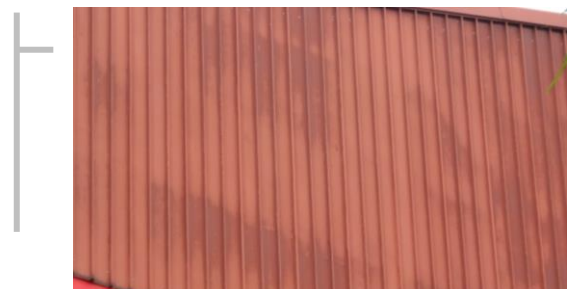
- The **most suitable paint type for overpainting** BlueScope coated steel products is generally **water-based acrylic**. However, in more **corrosive salt marine locations**, it may be necessary to choose a **paint system that has enhanced corrosion resistance** (for example, inclusion of a zinc-rich primer).



- Due to ongoing improvements in paint technologies, at any one time there are numerous potentially suitable paint products available. It is therefore recommended that a reputable paint supplier be consulted to determine the most appropriate paint system for your application and environment.
- It is recommended that the paint supplier's safety guidelines are followed, especially those regarding the wearing of appropriate personal protective equipment. Typically, a more holistic safety recommendation can be found from relevant **safety data sheet**.
- Ensure conformance to local legislative requirements for "Working at Heights" and local water restrictions.
- It is recommended that paints from different suppliers are not mixed (for example, primer and topcoats).
- Note that not all post paint systems available are suitable for use in the collection of drinking water. Therefore, if a paint system is applied to a roof used for drinking water collection, ensure that it is recommended by the paint supplier for this purpose.



- Air drying paints have different weathering characteristics to oven cured prepainted products like COLORBOND® steel. Therefore, areas overpainted with air-drying paints to match adjacent COLORBOND® steel areas may weather at a different rate and vary in appearance over time.



Technical Bulletin, TB-2 (MY)



Rev 0, October 2021

This issue supersedes all previous issues.

REPAIR OF MINOR SCRATCHES AND BLEMISHES

BlueScope does not recommend the use of touch-up paint to repair damage or scratches to the painted surface. As explained above, air drying paints have different weathering characteristics to oven-cured prepainted products like COLORBOND® steel, leading to variations in appearance over time where touch-up paint has been used. BlueScope has no recommended method for the removal of touch-up paint.



Minor scratches (<2mm in width and unnoticeable from ground level) should be left alone as the available metallic coating will protect against corrosion. If scratches are more noticeable on new material, it is the recommendation of BlueScope to replace the affected product.

Galling is generally only superficial damage caused by painted surfaces rubbing together as a result of vibration and inter-sheet movement during transport. Treat as per minor scratches. For more information about Galling, please refer to Fact Sheet 1 – Scuffing & Galling, link:

<https://www.nsbluescope.com/my/wp-content/uploads/sites/7/2020/10/Fact-Sheet-Scuffing-and-Galling.pdf>

Technical Bulletin, TB-2 (MY)



Rev 0, October 2021

This issue supersedes all previous issues.

OVERPAINTING THE SURFACE

Apply the selected paint finish to the clean prepared surface. Ensure manufacturer's instructions are followed, especially with regard to application and film thickness.

NOTE: The overpainting of COLORBOND® steel, ZINCALUME® steel or any coated steel manufactured by BlueScope will void any warranties issued. Should, for any reason, overpainting be undertaken on behalf of and under instruction from BlueScope, then a future warranty (if any) position will be as negotiated between the customer and BlueScope.

RELATED TECHNICAL BULLETINS

Technical Bulletin, TB-5 Swarf staining of steel profiles

Technical Bulletin, TB-38 Effect of touch-up paint

Fact Sheet, FS-1 Scuffing & Galling

Technical Bulletin, TB-2 (MY)



Rev 0, October 2021

This issue supersedes all previous issues.

Table 1: Recommended surface preparation for COLORBOND® steel or prepainted coated steel.

CONDITION	RECOMMENDED PREPARATION
Brand new (typically less than 1 year of weathering)	<p>Mechanical abrasion</p> <ol style="list-style-type: none">1. Using a mop or a soft nylon bristle broom, wash the COLORBOND® steel surface with household detergent and water to remove all major loose particles that may damage the surface in subsequent procedures. Rinse thoroughly with fresh potable water and allow surface to dry.2. Slightly roughen the surface lightly with kitchen scourer pads (not steel wool) to provide a “key” to enhance adhesion of the selected paint finish by removing surface gloss. Take care not to remove the existing paint surface on bends. Do not use steel wool as an abrasive medium as it will generate swarf (small metallic particles), which will damage the material surface (refer to Technical Bulletin TB-5 Swarf staining) of steel profiles.3. Using a mop or a soft nylon bristle broom, wash the COLORBOND® steel surface with household detergent and water. Rinse thoroughly with fresh potable water and allow surface to dry.
Aged (typically more than 1 year of weathering)	<p>Natural weathering</p> <p>After 1-2 years of service COLORBOND® steel will typically have a uniformly weathered surface as indicated by a slight reduction in gloss appearance. A uniformly weathered surface should provide adequate adhesion of the selected paint finish. Using a mop or a soft nylon bristle broom, wash the COLORBOND® steel surface with household detergent and water. Rinse thoroughly with fresh potable water and allow surface to dry.</p>

Technical Bulletin, TB-2 (MY)



Rev 0, October 2021

This issue supersedes all previous issues.

Table 2: Recommended surface preparation for ZINCALUME® steel or unpainted metallic coated steel.

CONDITION	RECOMMENDED PREPARATION
Brand new or evenly weathered surface (usually well washed)	Using a mop or a soft nylon bristle broom, wash the surface with household detergent and water. Rinse thoroughly with fresh potable water and allow surface to dry.
Damaged areas (i.e. corrosion product evident)	Repair of damaged areas where base metal has been exposed and rust is apparent, can be undertaken by first removing all rust thoroughly with a stiff nylon bristle brush. NOTE: Care should be taken to only remove corrosion products and not the metallic coating. Sweep away all loose particles, then thinly apply a zinc rich etch primer from a reputable paint supplier.

NOTE: The condition of the surface will depend on a number of factors, in particular product age, orientation (i.e. north, south, east or west facing), environment, exposure and application.



☎ 1 300 88 6288

🌐 NS BlueScope Malaysia

✉ enquiries.malaysia@bluescope.com

Find us on

📺 📺 📺 📺 📺 NS BlueScope Malaysia

The information and advice contained in this Technical Bulletin ("Bulletin") is of a general nature only and has not been prepared with your specific needs in mind. You should always obtain specialist advice to ensure that the materials, approach, and techniques referred to in this Bulletin meet your specific requirements. NS BlueScope Malaysia Sdn Bhd makes no warranty as to the accuracy, completeness or reliability of any estimates, opinions or other information contained in this Bulletin and to the maximum extent permitted by law, NS BlueScope Malaysia Sdn Bhd disclaims all liability and responsibility for any loss or damage, direct or indirect, which may be suffered by any person acting in reliance on anything contained in or omitted from this Bulletin. COLORBOND®, ZINCALUME®, BlueScope and the BlueScope brand mark are registered trademarks of BlueScope Steel Limited. © 2021 NS BlueScope Malaysia Sdn Bhd 199101012824 (223136-P) All rights reserved